



INSTALLATION METHODOLOGY OF MSN 120 STAIR NOSING

- **Description**
 - FloorworX Stair Nosing - A neat, non-slip tread for a stair edge.
 - Code: MSN 120.
 - Nominal Dimensions - 65 mm (tread) x 38 mm (riser lip or face) x 3.0 m (length)
 - Packaging - 5 x 3.0 L/m = 15 L/m per pack.
 - Adhesive - FloorworX No 71 Contact Adhesive
- **Preparation**
 - Ensure that the edges of the stair treads are square, firm, dry, level and free of dirt and dust, or any other substances.
 - Cut the Stair Nosing into the required lengths.
 - NB - The Stair Nosing should be installed after the floor coverings have been fitted against the stair risers but before the vinyl has been fitted onto the treads.
- **Marking out**
 - Loose lay the Stair Nosing into position.
 - Push the face or lip of the nosing snugly up against the riser in order to avoid leaving a void behind the leading edge, then mark the rear edge on the stair tread only.

(See Illustration 1)

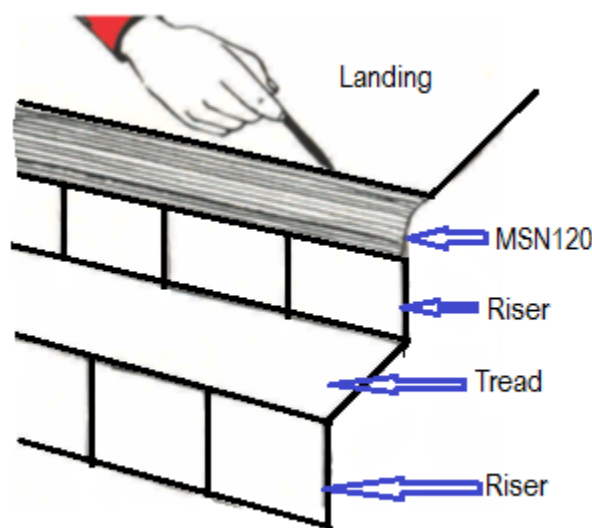


Illustration 1.

- **Adhesive application**

- Using a clean 20mm paint brush, apply FloorworX No71 contact adhesive spread evenly onto both the tread section of the stair and the underside of the nosing. Only apply the adhesive to the portion of the nosing that will be in contact with the tread.
- Allow both surfaces to become completely dry.
(See Illustration 2)

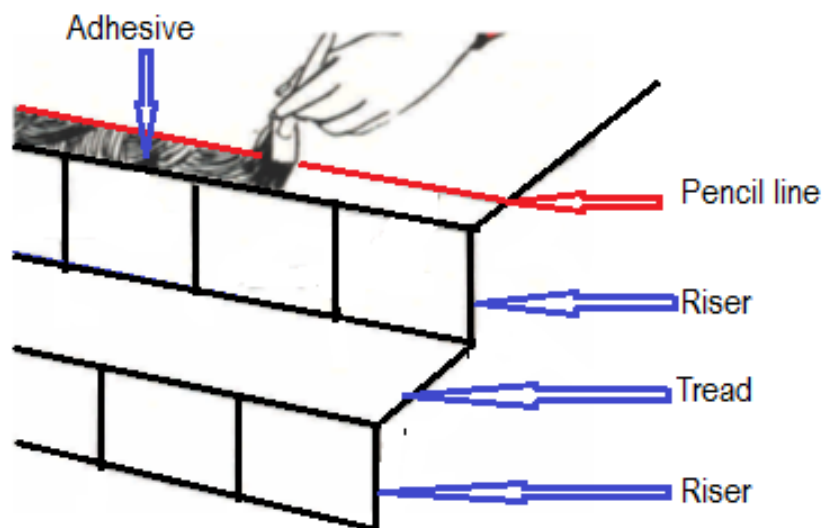


Illustration 2.

- **Installation**

- Carefully place the back corner edge of nosing into position at one end, then pressing firmly down to ensure perfect contact between the two adhesive surfaces, gradually work along the entire length of the nosing, ensuring that it remains aligned with the pencil mark or chalk line on the tread. (It is imperative that the face or lip remains hard pressed against the riser during the application, in order to ensure a successful installation.)
- If the Stair Nosing is to be turned around the stair, then it must be mitred on the stairwell side.
(See illustration 3)

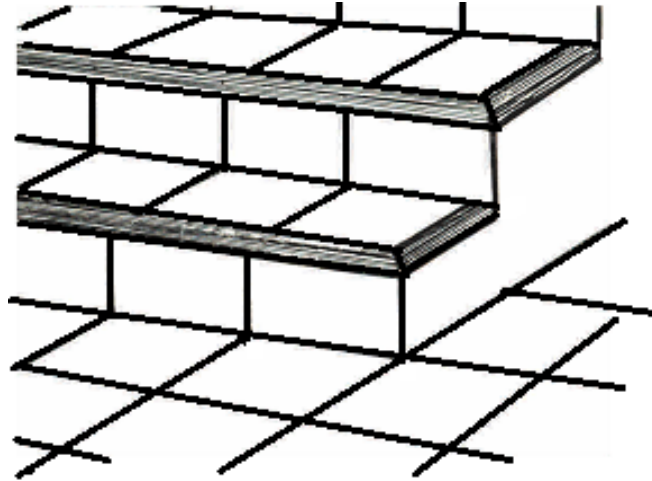
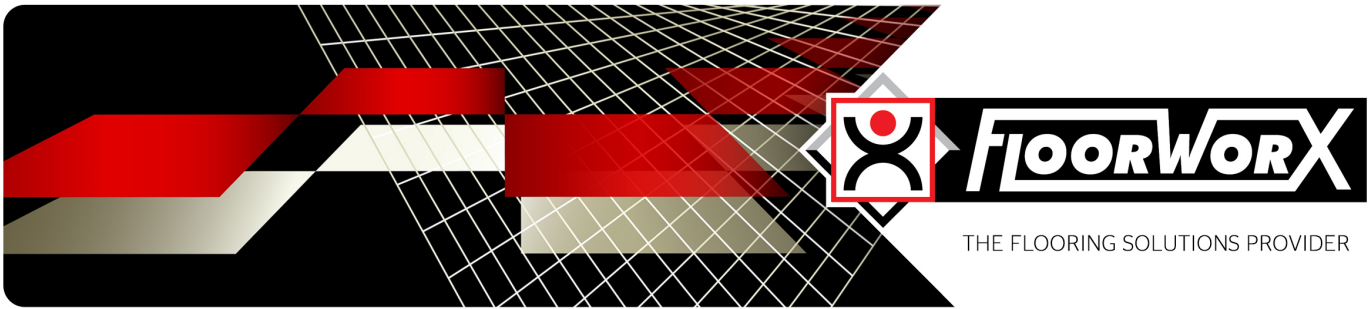


Illustration 3.

DISCLAIMER
THIS INFORMATION IS BASED ON OUR EXPERTISE AND IS GIVEN IN GOOD FAITH BUT WITHOUT WARRANTY. WE CANNOT ACCEPT LIABILITY FOR ANY DAMAGE, LOSS, OR ACCIDENT CAUSED DIRECTLY OR INDIRECTLY BY THIS PRODUCT.

An Accéntuate Limited Company